

# Van Gordon Duplex

1175 Van Gordon Street  
Lakewood, Colorado 80401

REVISION HISTORY

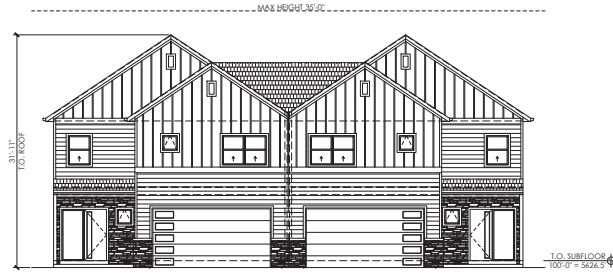
NO.	DESCRIPTION

CURRENT SET: 15 November 2019  
CONSTRUCTION SET:  
TOWN SET:  
DESIGN BY: SJS  
DRAWN BY: SJS  
CHECKED BY: SJS  
SHEET TITLE:

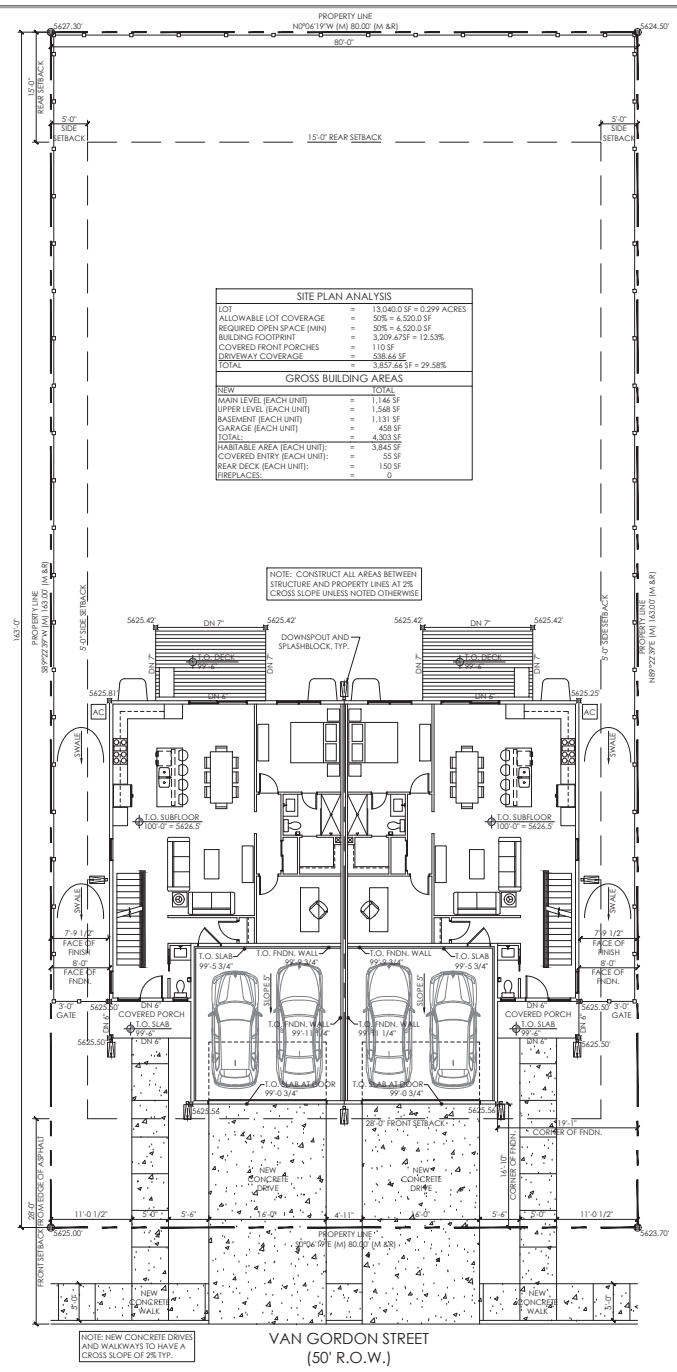
SITE PLAN

SHEET #:

A1.0



**EAST ELEVATION**  
SCALE: 1/8" = 1'-0" 2



**VAN GORDON STREET**  
(50' R.O.W.)



REVISION HISTORY

NO.	DESCRIPTION	DATE

CURRENT SET: 15 November 2019  
CONSTRUCTION SET:  
TOWN SET:  
DESIGN BY: SJS  
DRAWN BY: SJS  
CHECKED BY: SJS

SHEET TITLE:  
MAIN LEVEL ELECTRICAL PLAN

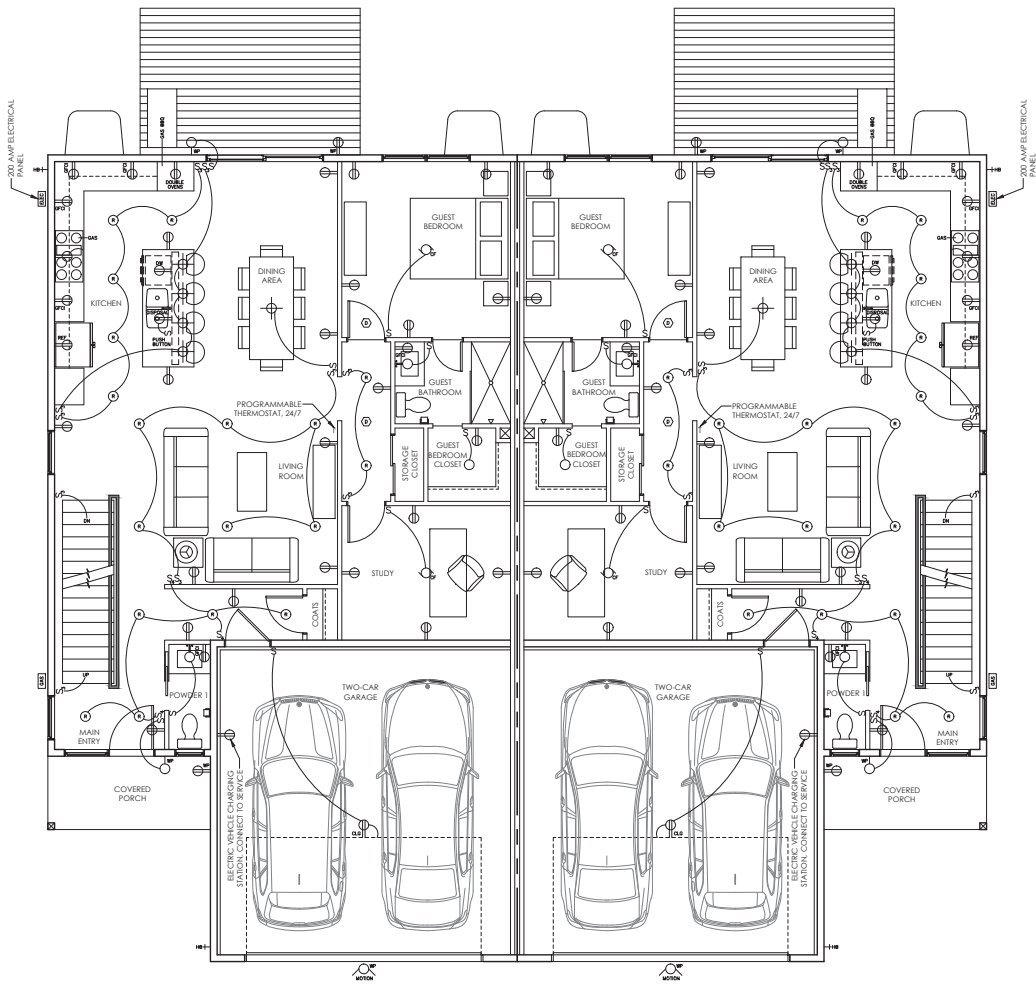
SHEET #:

A2.5

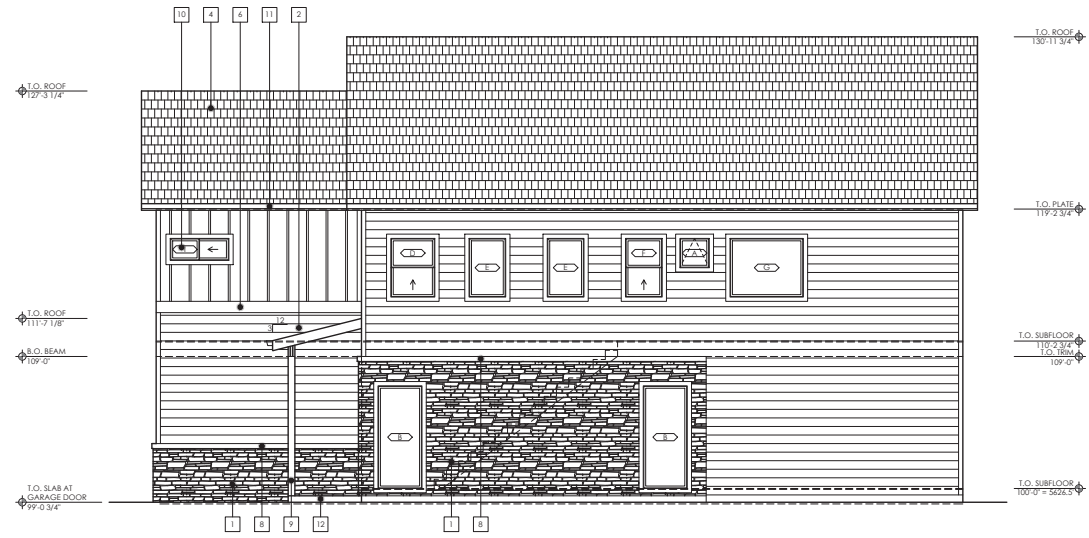
	ELECTRIC BASEBOARD		CEILING FAN & LIGHT
	CAT 6 / ETHERNET CABLE		EXHAUST FAN
	HANGING PENDANT		120V OUTLET GROUND FAULT INTERCEPTOR
	FLUORESCENT / LED LIGHT		120V OUTLET
	UNDERCOUNTER LIGHT		120V OUTLET FLOOR MOUNT
	CEILING MOUNTED LIGHT		120V OUTLET WATERPROOF
	RECESSED LIGHT		220V OUTLET
	DIRECTIONAL LIGHT CAN		CO / SMOKE DETECTOR
	WALL MOUNTED LIGHT		3WAY SWITCH
	RECESSED LIGHT CAN WATERPROOF		4WAY SWITCH
	LIGHT WATERPROOF		SINGLE SWITCH
	WALL MOUNTED LIGHT WATERPROOF		
	SECURITY LIGHT WATERPROOF / MOTION		

NOTE: ALL 125-VOLT, 15 AND 20 AMPERE BRANCH CIRCUITS SUPPLYING OUTLETS INSTALLED IN DWELLING UNIT FAMILY ROOMS, DINING ROOMS, LIVING ROOMS, PARLORS, LIBRARIES, DEN'S, BEDROOMS, SUNROOMS, RECREATION ROOMS, CLOSETS, HALLWAYS, OR SIMILAR ROOMS OR AREAS SHALL BE PROTECTED BY A LISTED, ARC-FAULT CIRCUIT INTERRUPTER, COMBINATION-TYPE, INSTALLED TO PROVIDE PROTECTION OF THE BRANCH CIRCUIT. SMOKE ALARMS INSTALLED PURSUANT TO SECTION R314.1 OF THE IRC ARE NOT REQUIRED TO BE PROTECTED BY AN ARC-FAULT CIRCUIT INTERRUPTER [NEC ARTICLE 210.12(A) AS AMENDED]

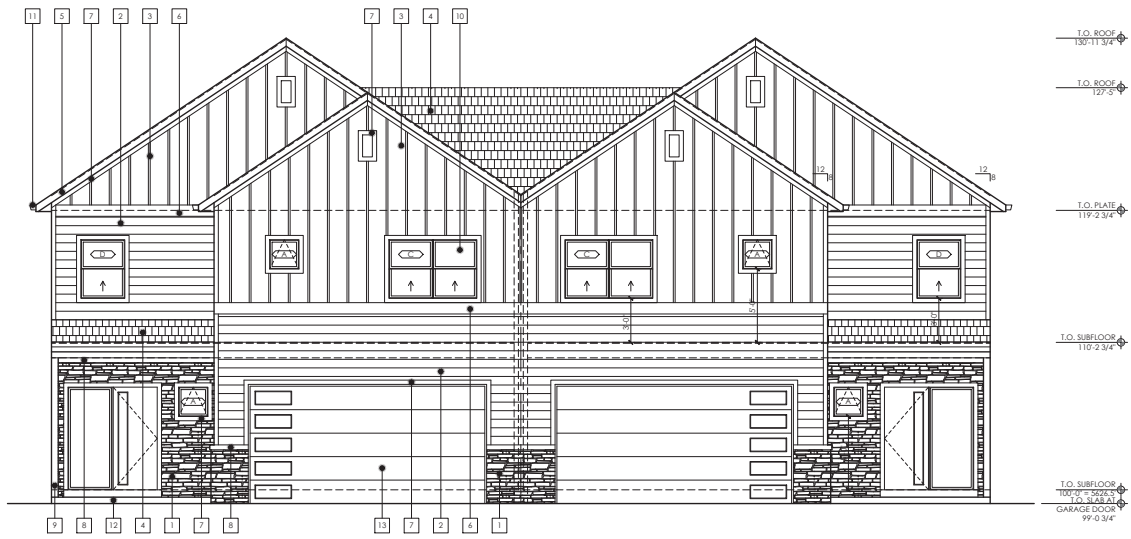
NOTE: AT LEAST 75% OF THE LAMPS IN PERMANENT INSTALLED LIGHTING FIXTURES WILL BE HIGH-EFFICIENCY LAMPS.



MAIN LEVEL ELECTRICAL PLAN 1  
SCALE: 1/4" = 1'-0"



**NORTH ELEVATION** 2  
SCALE: 1/4" = 1'-0"



**EAST ELEVATION** 1  
SCALE: 1/4" = 1'-0"

MATERIAL LEGEND	
1	5" SYNTHETIC STONE VENER
2	7" SMOOTH FIBER CEMENT LAP SIDING
3	BOARD AND BATTEN AT 14" O.C.
4	ASPHALTIC SHINGLE ROOF
5	1X6 SMOOTH FASCIA BOARD
6	1X10 TRIM
7	1X4 TRIM
8	4" PRECAST TRIM
9	4X6 TIMBER POST/BEAM
10	VINYL WINDOWS
11	PRE-PANED GLUTTER/DOWNSPOUT
12	CONCRETE SLAB / STAIRS
13	CUSTOM GARAGE DOOR

REVISION HISTORY

NO.	DESCRIPTION

CURRENT SET:	15 November 2019
CONSTRUCTION SET:	
PROJECT SET:	
DESIGN BY:	SJS
DRAWN BY:	SJS
CHECKED BY:	SJS
SHEET TITLE:	

EXTERIOR ELEVATIONS

SHEET #:

**A3.1**